



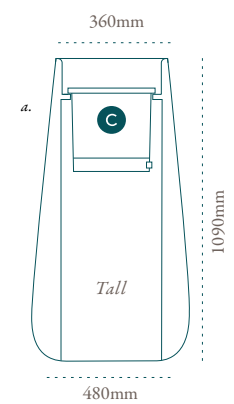
Tuber
by Haldane Martin



Haldane Martin's Tuber, as the name suggests, is inspired by the tubular shape of many plants and bulbs that lie just beneath the surface of the soil. It is almost as if the planter brings this sub-terraneous shape out to represent the life support system of the plant for all to see – life springing forth and nourished from a tubular root structure.



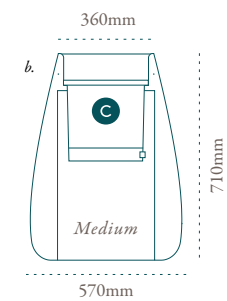
SPECIFICATIONS



TUB10W/S

wood or all stone

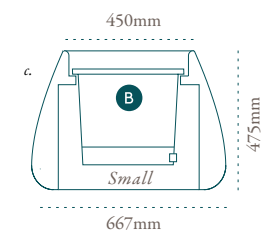
weight: W 36kg / S 58kg
inch: 18.9x14.1x42.9"



TUB07W/S

wood or all stone

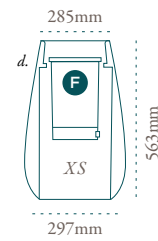
weight: 28kg / 48kg
inch: 22.4x14.1x27.9"



TUB04W/S

wood or all stone

weight: W 27kg / S 45kg
inch: 26.3x17.7x18.7"

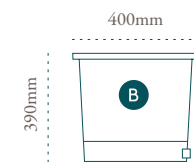


TUB05W/S

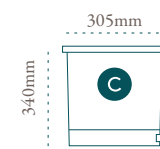
wood or all stone

weight: W 15kg / S 25kg
inch: 11.7x11.2x22.1"

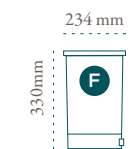
LINERS



round
soil: 77 gal | 27 l
water: 1.6 gal | 6 l



round
soil: 3.6 gal | 14 l
water: 0.8 gal | 3 l



round
soil: 4.27 gal | 16.17 l
water: 0.92 gal | 3.51 l

Finish Options



Black

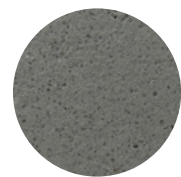
Sandstone

Terracotta

White

Brown

Grey



natural wood



oiled wood

Liners

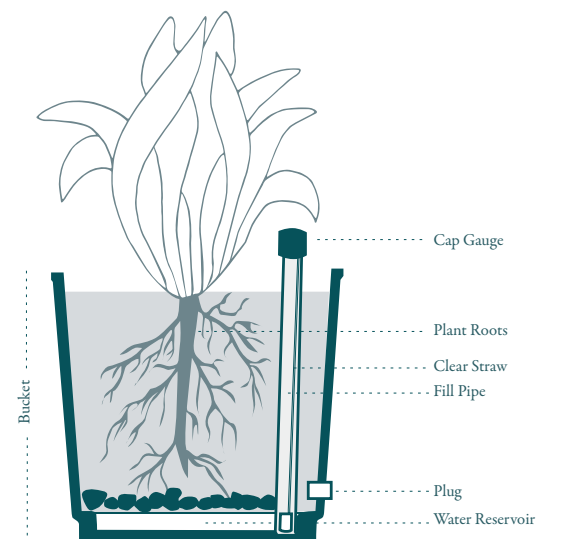


“Self-Watering” Liners

All Indigenous planters come with a liner for planting. The drawings show the sizes and capacities. These liners have been designed to house plants in proportion to the size of the planters. They contain a water reservoir at the base into which the roots grow. Using the process of “capillary action” the water is pushed up into the soil.

Water levels in the reservoir can be measured using the cap gauge and the liner has a plug which must be removed if the planter is exposed rainfall.

The liners usually need 14 weeks to integrate with the root system during which watering should be done the normal way onto the soil. Thereafter in typical conditions the reservoir only needs filling once or twice a month



Always use the planter in conjunction with the liner and remove the plug at the base of the liner and the base of the planter if the planters are going to receive rainfall.

