

HALDANE

by
MiMiC.





HALDANE

ABOUT

Slingshot

Envision Safari Sunsets.

The wildly cool Slingshot Collection is distinctly masculine with minimal visual components.

The simple frame is crafted from laser cut stainless steel tube. The back legs penetrate the seat tubing, joining the padded back rest, to form a strong triangulated structure.

HALDANE

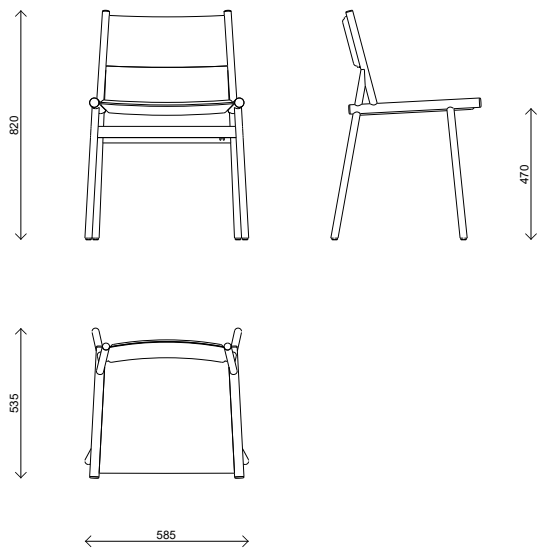


COLLECTIONS

Slingshot

Dining Chair

PACK SIZE (MM)	L620 X W570 X H850	
CUBIC METERS	0.30 M³	
PACK WEIGHT	7 KG	
MATERIALS	FRAMES	POWDER COATED 304 STAINLESS STEEL
MATERIALS	UPHOLSTERY	OUTDOOR FABRIC



HALDANE



COLLECTIONS

Slingshot

Dining Chair + Arms

PACK SIZE (MM) L620 X W570 X H850

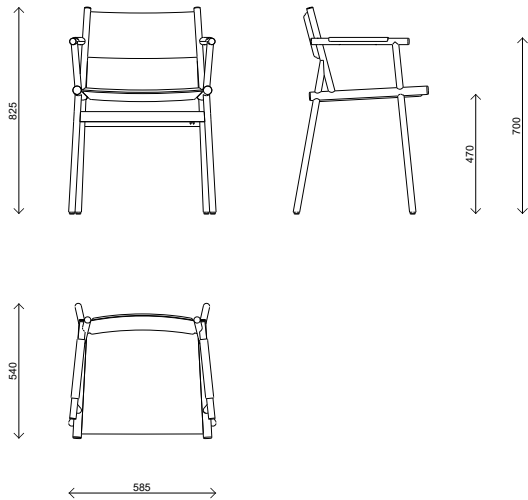
CUBIC METERS 0.31 M³

PACK WEIGHT 8 KG

MATERIALS FRAMES POWDER COATED 304
STAINLESS STEEL

MATERIALS UPHOLSTERY OUTDOOR FABRIC

MATERIALS ARM RESTS IROKO TIMBER



HALDANE

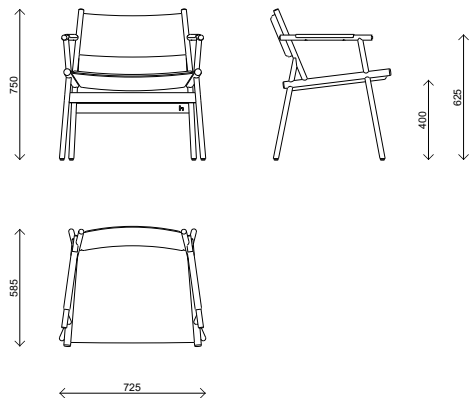


COLLECTIONS

Slingshot

Lounge Chair

PACK SIZE (MM)		L750 X W620 X H780
CUBIC METERS		0.36 M³
PACK WEIGHT		9 KG
MATERIALS	FRAMES	POWDER COATED 304 STAINLESS STEEL
MATERIALS	UPHOLSTERY	OUTDOOR FABRIC
MATERIALS	ARM RESTS	IROKO TIMBER



HALDANE



COLLECTIONS

Slingshot

Bar Stool

PACK SIZE (MM) L550 X W570 X H1130

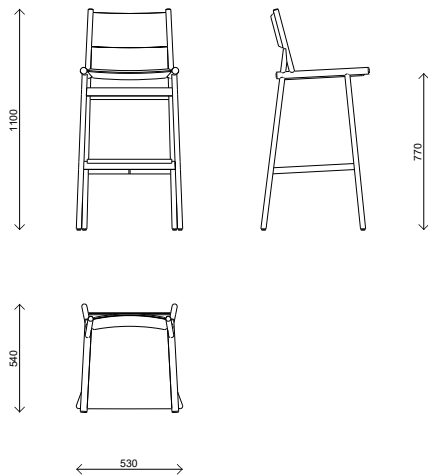
CUBIC METERS 0.36 M³

PACK WEIGHT 9 KG

MATERIALS FRAMES POWDER COATED 304
STAINLESS STEEL

MATERIALS UPHOLSTERY OUTDOOR FABRIC

MATERIALS FOOT RAIL IROKO TIMBER



HALDANE



COLLECTIONS

Slingshot

Kitchen Stool

PACK SIZE (MM) L550 X W570 X H1030

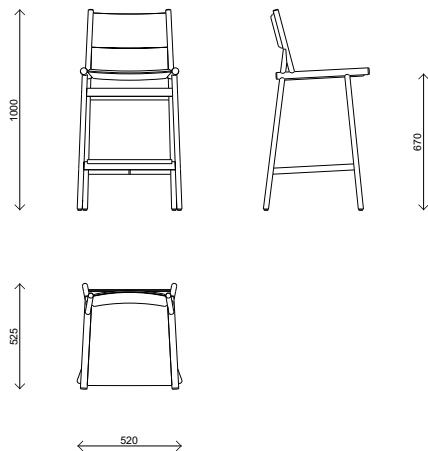
CUBIC METERS 0.33 M³

PACK WEIGHT 8 KG

MATERIALS FRAMES POWDER COATED 304
STAINLESS STEEL

MATERIALS UPHOLSTERY OUTDOOR FABRIC

MATERIALS FOOT RAIL IROKO TIMBER



HALDANE

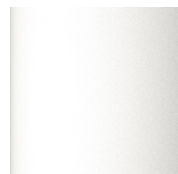


FINISHES

Frame Powder Coat

Distinctly masculine, the simple triangulated frames of laser cut stainless steel tube are powder coated in exterior grade UV stable, pure polyester with a luxe ferro grain finish. Elect the colour of your choice from our extensive colour palette.

Care for your powder coated components by wiping when necessary with a damp cloth.
For tougher spills use a solution of light detergent (like Sunlight liquid) and water.
Avoid scraping sharp objects on your powder coated components.



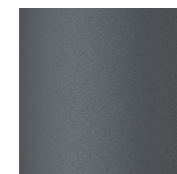
Traffic White



Silk Grey



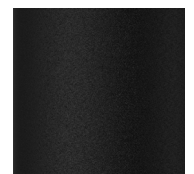
Light Grey



Basalt Grey



Umber Grey



Jet Black



Cream



Beige Red



Coral Red



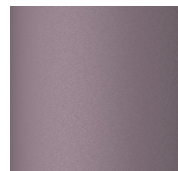
Purple Red



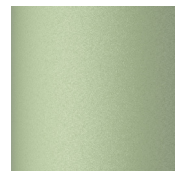
Chestnut Brown



Ochre Brown



Patel Violet



Pale Green



Emerald Green



Moss Green



Olive Green



Lemon Yellow



Pastel Turquoise



Gentian Blue



Night Blue



Ocean Blue

FINISHES

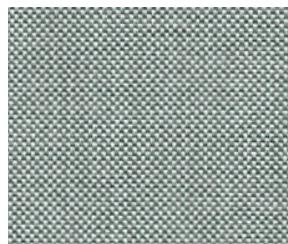
Upholstery

Crevin Dolce (IMP)

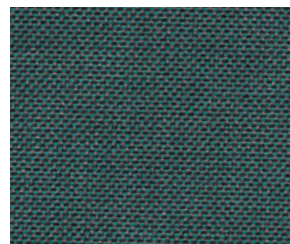
Dolce (IMP) is preferred for fully outdoor conditions as this beautiful and functional upholstery fabric collection is finished with stain-repellence and with an internal layer of waterproof lamination.

Care for your fabric by brushing off loose dirt. When necessary, spray on a cleaning solution of water and mild soap, use a soft bristle brush to clean. Allow cleaning solution to soak into fabric. Rinse thoroughly until all soap residue is removed. Air dry.

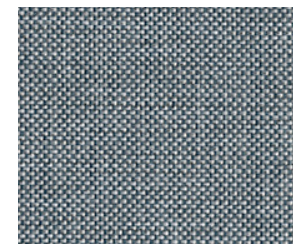
When leaving your furniture out in the elements for a prolonged period, we advise the use of the optional Weather Covers.



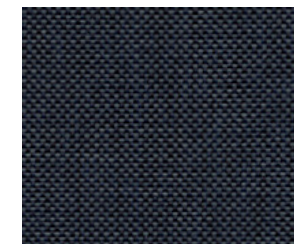
Crevin - Dolce - 31 (IMP) Turquoise



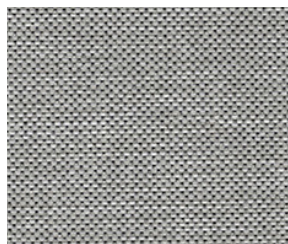
Crevin - Dolce - 33 (IMP) Lagoon



Crevin - Dolce - 43 (IMP) Sky



Crevin - Dolce - 42 (IMP) Indigo



Crevin - Dolce - 80 (IMP) Cloud



Crevin - Dolce - 32 (IMP) Avo



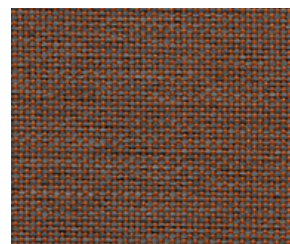
Crevin - Dolce - 30 (IMP) Pistchio



Crevin - Dolce - 38 (IMP) Olive



Crevin - Dolce - 29 (IMP) Peach



Crevin - Dolce - 24 (IMP) Sunset

FINISHES

Timber

Iroko

Iroko is an African hardwood that will gradually beautify with age to a striking silver-grey patina. When the wood is new it expresses a variety of warmer tones.

Timber components come treated with ProNature (www.pronature.co.za) outdoor oil. The oil seals and protects the timber against minor stains and nourishes the timber to preventing drying out when exposed to the outdoor elements. In time, hairline cracking will appear, due to the timber drying out. This surface cracking is natural, not a defect, and will not affect the structural integrity of the furniture.

Care for your timber components by maintaining them with ProNature oil. The frequency of maintenance required will depend on the level of exposure to the outdoor elements. Lightly sand the furniture with a 180 grit sand paper and re-apply the ProNature oil according to the instructions on the tin.



Iroko Timber - Clear



Iroko Timber - Smoke

HALDANE

Limited Warranty

1. HALDANE MARTIN DESIGN (Pty) Ltd (Seller) offers a limited warranty on products sold by the Seller to the purchaser (Purchaser), covering defects in material and workmanship for a period of 2 years from the date of invoice, subject to terms, conditions and limitations described below.
2. Purchaser shall promptly notify Seller in writing of any defect in any product purchased from Seller, in reasonable detail to satisfaction of Seller. The seller has the right to inspect any product claimed defective before making a final determination of the claim.
3. Seller's liability under this Limited Warranty is limited to the repair or replacement of any product determined by the Seller to be defective. The seller has sole discretion to determine which method will be used to correct non-conformities. Reimbursement for repairs made must be approved by Seller in writing in advance. Purchaser and Seller agree that this remedy is exclusive.
4. The Limited Warranty does not cover claims for damage resulting from normal wear and tear or unusual conditions of use.
5. DISCLAIMER OF OTHER LOSS Seller shall not be liable for lost profits, replacement rental costs, other costs of repair or replacement, or any consequential, special, indirect or incidental damages resulting from any defects in material or workmanship. Except set forth herein, the seller shall not be liable for the cost of labour expended by others on any defective product or consequential, special, indirect or incidental damages to anyone by reason of defective material or workmanship. The liability of the seller is limited to repairing or replacing the defective product in accordance with the terms of this warranty.
6. LIMITATIONS This warranty applies only to furniture used for the purpose it was designed. The Seller excludes and will not pay consequential or incidental damages under this warranty. By this, the Seller means any loss, expense or damage other than the furniture itself that may result from a defect in the furniture.
7. IMPROPER CARE AND USE Our furniture requires some routine maintenance. The Seller will not repair or replace the furniture that has been abused, neglected, exposed to extreme humidity, extreme temperature, and alterations to the product or unauthorized repair. The Seller will also not cover damage that results from normal wear and tear or accidents including scratches, burns, watermarks or indentations.
8. DIFFERENCES IN COLOUR Each piece of furniture is unique, minor variations of colour and grain of timber elements or fabric might occur from piece to piece. These variations ensure that your piece of furniture is unique and are in no way manufacturing defects. Therefore, this warranty does not cover such minor differences, or differences between the finished sample, or printed illustrations and our furniture.

HALDANE MARTIN DESIGN (Pty) Ltd

Reg No: 2014 / 281318 / 07